

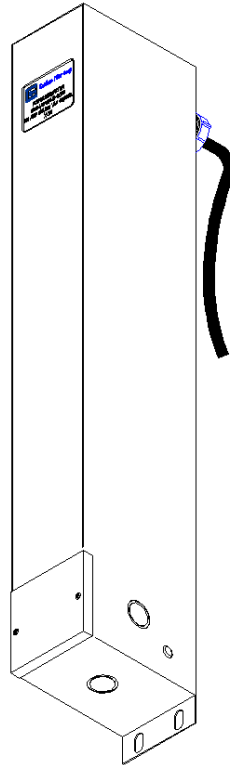


**GENISCO FILTER™**  
*always on.™*



## Power Line Filters

**GF67915 High Performance Series Filter**  
**Wall mount with pipe penetration**  
**100 dB from 14 kHz ~ 18 GHz**



### Product Summary

These EMI/RFI Power Line Filters are used to block unwanted signals and remove interference from entering or exiting through power lines for shielded rooms, SCIFS, screen rooms and many other forms of Faraday cages. It provides 100 dB protection against EMI interference from 14 kHz ~ 18 GHz.



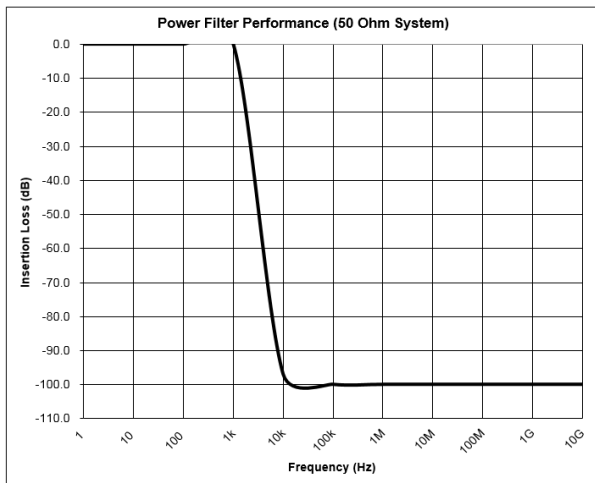
**See model list on page 3 & 4 for UL listed filters**





## FUNCTIONAL CHARACTERISTICS

- Voltage Ratings:
  - 24-1,000 VDC
  - 120/208 VAC (50/60 Hz)
  - 277/480 VAC (50/60 Hz)
- Voltage Drop:
  - 2% maximum at full rated unity power factor load.
- Harmonic Distortion:
  - 4% maximum at full rated unity power factor load
- Temperature Rating:
  - MIL-PRF-15733
- Current Overload:
  - 140% maximum current rating
- RF Radiation:
  - Greater than 100 dB isolation
- Dielectric With-Standing Voltage:
  - 2,200 VDC (prior to installation of discharge resistors)
- Insulation Resistance:
  - MIL-PRF-15733 (prior to installation of discharge resistors)
- Insertion loss:
  - 100 dB 14 KHz to 18 GHz
  - 50/50 Ohm System



\*Representation of Insertion Loss Specifications

## SPECIAL FEATURES

### Filter(s)

- Factory pre-wired clean output lead provided through the pipe penetration
- Low Pass filter circuits ~ passive components which includes inductors, capacitors, resistors, and optional transient suppression devices
- Manufactured and tested per applicable portions of MIL-PRF-15733
- All circuits provided in single enclosure
- Discharge resistors incorporated to eliminate potential shock hazard

### Enclosure

- Fabricated case of not less than 18 gauge cold rolled steel electro plated or painted Gray (Std. Paint Color)
- Sealed with welded and soldered seams for minimum shielding effectiveness 100 dB, 14 kHz to 18 GHz
- Threaded steel pipe penetration
- Double knock outs provided on filter case input
- Front cover access to input terminals
- Mounting tab provided for easy wall mount options

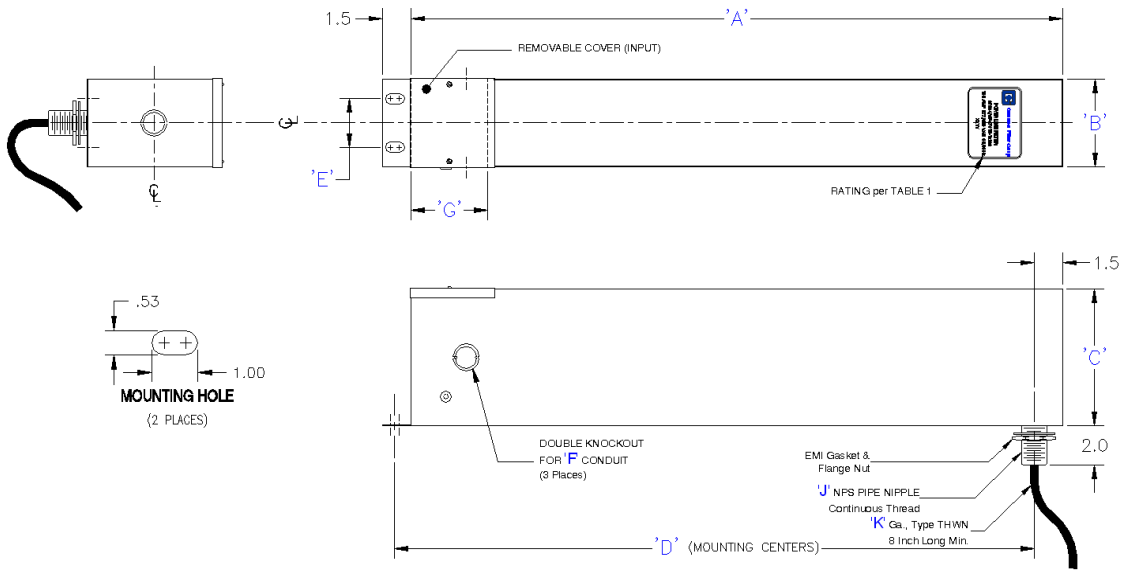
## Applicable Specifications

- Military Specifications
  - MIL-PRF-15733 General
- Military Test Methods
  - MIL-STD-202 Component Parts
  - MIL-STD-220 Insertion Loss
  - MIL-STD-285 Shielding Effectiveness
- NFPA 70/2011 National Electrical Code Standards
- **UL listed models.** Certified to UL 1283 standards (See page 3&4)


## Available Options

- MOVs - EMP and Surge Suppressors
- Alternate pipe penetration locations on the enclosure available by request.
- Voltage Indicator Lights
- Ground Wire

## Mechanical Dimensions



**Table 1 Mechanical Dimensions**

	# of Filters & Max Current Rating	A	B	C	D	E # of holes	F	G	J	K	Approx Weight (lbs)
YES	1x015	22	4.5	6	21.25	2	1 - 1/4	4	1	#10 THWN	30
YES	1x030	26	4.5	6	25.25	2	1 - 1/4	4	1	#8 THWN	35
YES	1x060	32	5	6	31.25	2	1 - 1/4	4	1	#6 THWN	50
YES	1x100	32	5	6	31.25	2	1 - 1/4	4	1	#2 THWN	50
YES	1x150	41	6	8	40.25	2	1 - 1/4	6	1	1/0 WELD	85
YES	1x200	41	6	8	40.25	2	1 - 1/4	6	1	2/0 WELD	85
	1x250	41	6	8	40.25	2	1 - 1/4	6	1	2/0 WELD	100
	1x300	47	8	10	46.25	2	1 1/4 - 1 1/2	6	1 1/4	3/0 WELD	150
	1x400	47	8	10	46.25	2	1 1/4 - 1 1/2	6	1 1/4	4/0 WELD	150



**GENISCO FILTER™**  
*always on.™*

	# of Filters & Max Current Rating	A	B	C	D	E # of holes	F	G	J	K	Approx Weight (lbs)
	2x015	22	8	6	21.25	2	1 – 1¼	4	1	#10 THWN	40
YES	2x030	26	8	6	25.25	2	1 – 1¼	4	1	#8 THWN	45
YES	2x060	32	10	6	31.25	3	1 – 1¼	4	1	#6 THWN	100
YES	2x100	32	10	6	31.25	3	1 – 1¼	4	1	#2 THWN	100
YES	2x150	41	11	8	40.25	3	1¼ – 1½	6	1¼	1/0 WELD	125
YES	2x200	41	11	8	40.25	3	1¼ – 1½	6	1¼	1/0 WELD	125
	3x015	22	11	6	21.25	3	1 – 1¼	4	1	#10 THWN	55
YES	3x030	26	11	6	25.25	3	1 – 1¼	4	1	#8 THWN	55
YES	3x060	32	15	6	31.25	3	1 – 1¼	4	1	#6 THWN	75
YES	3x100	32	15	6	31.25	3	1 – 1¼	4	1	#2 THWN	75
YES	4x015	22	14	6	21.25	3	1 – 1¼	4	1	#10 THWN	70
YES	4x030	26	14	6	25.25	3	1 – 1¼	4	1	#8 THWN	75

\*Other Circuit Configurations and Current Ratings Available Upon Request • Dimensions are in Inches

### Ordering Information

<b>GF67915</b>	<b>-2x</b>	<b>030</b>	<b>-00</b>
<b>Basic Prefix</b>	<b># of Filters *</b>	<b>Current Rating (Table 1)</b>	<b>Add-Ons (Opt)</b>
	-2x -3x -4x		00-Standard 01-Ground Wire 02- 03-MOVs 04-Pipe Option 2

\* One filter per conductive path  
 \*\* Represents maximum Voltage/Frequency

Specifications subject to change without notice.